

3D high performance point cloud processing for the most informed GIS Workflow



GeoCue Group
9668 Madison Blvd., Suite 202
Madison, AL 35758
USA
1-256-461-8289

Analyze

Process

Extract

LP360 | Basic

LP360 for ArcGIS seamlessly integrates 3D point clouds into ArcMap, providing the most comprehensive foundation on which to base GIS analysis. LP360 provides the ability to create and manipulate point cloud data directly from industry standard LAS format files without any time-consuming importing or converting processes. LP360 is not memory sensitive and allows gigabytes of data to be loaded, merged, and managed in ArcGIS. LP360 augments ArcGIS with dockable 3D and profile windows that extend the GIS desktop into the third dimension. Available in three functional levels, LP360 provides solutions from visualization through automated feature extraction.

LP360 Basic offers:

- Seamless management of thousands of LAS files
- Visualization of all LAS attributes as points and surface models
- On-the-fly surface rendering (TIN) and contouring with breakline enforcement
- Import and conversion of ASCII data
- Integrated and synchronized 3D and profile windows
- LAS statistics and file header information
- Extensive Quality Check tools
- Export tools for DTMs, DSMs, contours and specialty analysis rasters

LP360 | Standard

LP360 Standard edition adds easy to use tools for classifying (editing) point clouds and adding breaklines. Points can be attributed to any LAS classification using a rich palette of interactive tools. ArcGIS data layers of points, lines and polygons can be used to classify data, creating a true fusion of GIS and point cloud data. An extensive collection of functions are provided for creating breaklines for a variety of terrain modeling applications.

Standard edition, includes all the capabilities of Basic plus:

- Interactive classification tools
- Classify by GIS data layers and features (including 3D points, lines and polygons)
- Convert 2D vectors to 3D by automated surface elevation extraction
- Breakline digitization tools for a variety of constraint conditions
- Volumetric Analysis tools
- Cross-section generator/exporter
- Line-of-sight analysis

LP360 | Advanced

LP360 Advanced edition enables a framework for automatically classifying features in 3D point clouds and subsequently extracting and creating data layers from classified points. Advanced edition provides users with customizable classification and extraction parameters through an easy-to-use Point Cloud Task management interface. Point Cloud Tasks can be linked together to form a robust processing chain. Point cloud filtering and extraction algorithm results can be viewed prior to large scale deployment using a processing preview window.

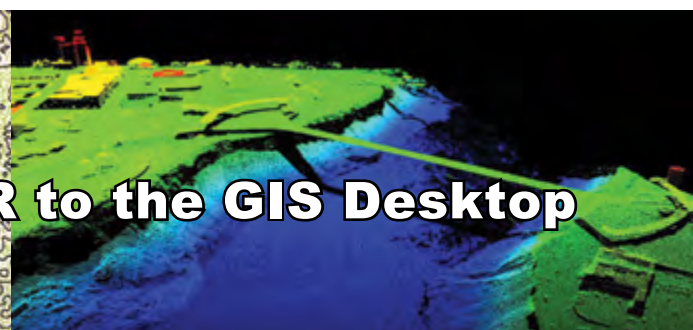
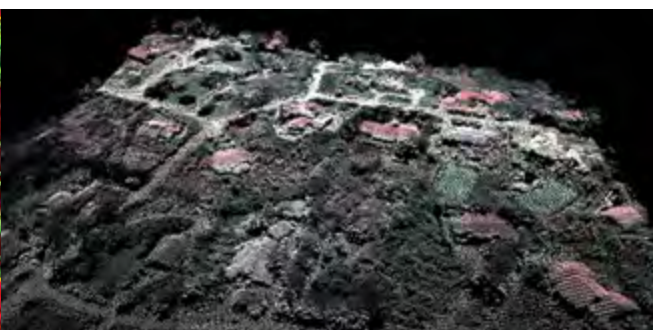
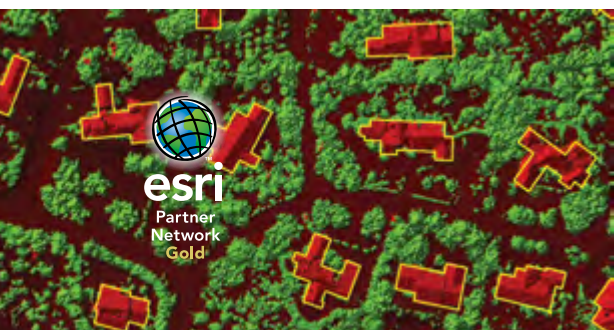
Advanced edition includes all the capabilities of Basic & Standard plus:

- Automatic ground classification
- Model Key Point (intelligent thinning) creation tools
- Automatic low/high/isolated point detection and classification
- Automatic building roof points classification
- Automatic rail alignment extraction and top of rail classification
- Create line work from classified feature point clusters
- Create LAS models of volumetric analysis results

Learn more at www.LP360.com

Two Environments on One:

Each license of LP360 allows you to run an instance of LP360 for ArcGIS or LP360 x64, our 64-bit standalone version of LP360.



Bringing the Benefits of LIDAR to the GIS Desktop